

RMD 2022

August

Published on
09/28/2022

Monthly Report Federal Public Debt

MINISTER OF ECONOMY

Paulo Roberto Nunes Guedes

EXECUTIVE SECRETARY

Marcelo Guarany

SPECIAL SECRETARY OF TREASURY AND BUDGET

Esteves Pedro Colnago Júnior

NATIONAL TREASURY SECRETARY

Paulo Fontoura Valle

NATIONAL TREASURY SUBSECRETARIES

Adriano Pereira de Paula

David Rebelo Athayde

Heriberto Henrique Vilela do Nascimento

Marcelo Pereira de Amorim

Otávio Ladeira de Medeiros

Paula Bicudo de Castro Magalhães

Pricilla Maria Santana

TECHNICAL TEAM

Public Debt Subsecretary

Otávio Ladeira de Medeiros

Coordinator: Public Debt Operations

Luís Felipe Vital Nunes Pereira

Coordinator: Public Debt Strategic Planning

Luiz Fernando Alves

Coordinator: Public Debt Control and Payment

Leonardo Martins Canuto Rocha

Information:

Gerência de Relacionamento Institucional - GERIN

Phone Number: (61) 3412-3188; Fax: (61) 3412-1565

Secretaria do Tesouro Nacional (National Treasury Secretariat)

Edifício Sede do Ministério da Economia, Esplanada dos Ministérios, Bloco P, 2º andar

70048-900 - Brasília – DF

Correio Eletrônico: stndívida@fazenda.gov.br

Home Page: <http://www.tesouro.fazenda.gov.br>

The Federal Public Debt Monthly Report is published by the National Treasury Secretariat. Total or partial reproduction is permitted, mentioned its source .

Contents

1. Primary Market Transactions	5
1.1 FPD Issuances and Redemptions	5
1.2 Domestic Federal Public Debt –DFPD	6
DFPD Issuances and Redemptions	6
Treasury Program Direct	7
Direct Issuances and Cancellations	8
1.3 External Federal Public Debt —EFPD.....	9
2. Outstanding Federal Public Debt – FPD	10
2.1 Evolution	10
2.2 Variation Factors.....	11
2.3 Profile	12
Indexes.....	12
Holders	13
3. Federal Public Debt - FPD Maturity Profile	14
3.1 Maturities	14
3.2 Average Maturity.....	15
3.3 Average Term to Maturity—ATM	16
4. Federal Public Debt – FPD Average Cost	17
4.1 Outstanding Average Cost	17
4.2 Average Cost of DFPD Issuances - Public Offerings	18
5. Secondary Market of Federal Public Securities	19
5.1 Secondary Market Turnover	19
5.2 Public Securities Yield	21
6. Public Debt Liquidity Reserve	22
7. STATISTICS of Executed Guarantees	23

TABLES

Table 1.1 - FPD Issuances and Redemptions Held by the Public	5
Table 1.2 - FPD Issuances and Redemptions Held by the Public, by index	5
Table 1.3 - DFPD Issuances and Redemptions	6
Table 1.4 - Treasury Direct Program	7
Table 1.5 - Registered Investors Profile	8
Table 1.6 - DFPD Non-competitive Issuances	8
Table 1.7 - EFPD Issuances and Redemptions	9
Table 2.1 - Outstanding FPD Held by the Public	10
Table 2.2 - FPD Variation Factors Held by the Public	11
Table 2.3 - FPD Profile Held by the Public	12
Table 2.4 - DFPD Public Securities Holders	13
Table 3.1 - FPD Maturities Held by the Public	14
Table 3.2 - Federal Public Debt Held by the Public Due in 12 Months, by index	14
Table 3.3 - FPD Average Maturity	15
Table 3.4 - Average Maturity of DFPD Issuances - Public Offerings, by index	15
Table 3.5 - FPD ATM Held by the Public	16
Table 4.1 - FPD Average Cost	17
Table 4.2 - Average Cost of DFPD Issuances - Public Offerings	18
Table 5.1 - Secondary Market Turnover, by Security	19
Table 5.2 - Top 5 Maturities Turnover in the Secondary Market, by index	20

GRAPHS

Graph 1.1 - DFPD Issuances and Redemptions	7
Graph 1.2 - EFPD Issuances and Redemptions	9
Graph 2.1 - FPD Profile, by index	10
Graph 2.2 - Portfolio Profile, by holder	13
Graph 2.3 - Average Maturity Profile, by holder	13
Graph 3.1 - Average Maturity of DFPD Issuances on Public Offerings Vs Outstanding Average Maturity	15
Graph 4.1 - FPD, DFPD and EFPD Average Cost and Selic Rate - over the past 12 months	17
Graph 4.2 - Outstanding Average Cost and Average Cost of DFPD Issuances	18
Graph 4.3 - Average Cost of DFPD Issuances, by Security	18
Graph 5.1 - Secondary Market of Public Securities - Daily Turnover as Percentage of Respective Outstanding Volume	19
Graph 5.2 - Monthly Volume on Electronic Trading Platforms and its Market Share	20
Graph 5.2 - Public Securities Yield	21
Graph 5.3 - Public Securities Yield Evolution - Overall IMA	21
Graph 6.1 - Public Debt Liquidity Reserve	22

1. Primary Market Transactions

1.1 FPD Issuances and Redemptions

In the month of August, Federal Public Debt - FPD¹ issuances came to R\$ 143.93 billion, while redemptions totaled R\$ 200.55 billion, generating net redemptions of R\$ 56.62 billion, with R\$ 56.53 billion in net redemptions of Domestic Federal Public Debt - DFPD and R\$ 0.09 billion in net redemptions of External Federal Public Debt - EFPD.

Table 1.1
FPD Issuances and
Redemptions Held by
the Public
August/2022

(R\$ Mn)

	1 st Week 1 to 5/Aug	2 nd Week 8 to 12/Aug	3 rd Week 15 to 19/Aug	4 th Week 22 to 26/Aug	5 th Week 29 to 31/Aug	Total August/22
FPD ISSUANCES	25,129.19	24,351.33	42,822.99	32,939.75	18,690.59	143,933.85
I - DFPD	24,823.37	24,306.73	42,822.99	32,801.93	18,690.59	143,445.62
Public Offerings	23,930.95	23,437.21	41,654.29	32,049.38	16,473.23	137,545.06
Non-competitive Issuances with cash inflow ¹	0.00	0.00	0.00	0.00	0.00	0.00
Non-competitive Issuances without cash inflow ²	11.12	0.00	247.13	0.00	1,807.10	2,065.35
Exchanges	0.00	0.00	0.00	0.00	0.00	0.00
Treasury Direct	881.31	869.51	921.57	752.55	410.27	3,835.21
II - EFPD	305.82	44.60	0.00	137.82	0.00	488.23
Securities	0.00	0.00	0.00	0.00	0.00	0.00
Contractual	305.82	44.60	0.00	137.82	0.00	488.23
FPD REDEMPTIONS	1,699.93	529.59	197,198.48	845.12	281.47	200,554.59
III - DFPD	1,541.72	529.07	197,190.72	437.48	281.47	199,980.46
Maturities	1,034.75	0.00	196,478.91	0.00	0.00	197,513.65
Purchases	0.84	0.01	31.12	0.00	0.00	31.96
Exchanges	0.00	0.00	0.00	0.00	0.00	0.00
Treasury Direct	506.13	529.06	680.49	437.48	281.47	2,434.63
Dividends Payments ³	0.00	0.00	0.00	0.00	0.00	0.00
Cancelled Bonds	0.00	0.00	0.21	0.00	0.00	0.21
IV - EFPD	158.22	0.52	7.76	407.63	0.00	574.13
Securities	157.80	0.00	0.00	407.63	0.00	565.43
Contractual	0.42	0.52	7.76	0.00	0.00	8.70
NET ISSUANCES	23,429.26	23,821.73	-154,375.48	32,094.63	18,409.12	-56,620.74
DFPD (I - III)	23,281.66	23,777.66	-154,367.72	32,364.45	18,409.12	-56,534.84
EFPD (II - IV)	147.60	44.07	-7.76	-269.82	0.00	-85.90

¹ Non-competitive issuances that involve inflow cash resources as counterpart;

² Non-competitive issuances that do not involve inflow cash resources as counterpart;

³ Refers to redemptions of securities in order to pay dividends and/or interests over own capital from entity in which government has share. related to the profit of the fiscal year.

Historical Data: Annex 1.1

Table 1.2
FPD Issuances and
Redemptions Held by
the Public. by index
August/2022

(R\$ Mn)

	Issuances		Redemptions		Net Issuance
FPD	143,933.85		200,554.59		-56,620.74
DFPD	143,445.62	100.00%	199,980.46	100.00%	-56,534.84
Fixed Rate	59,163.14	41.24%	330.47	0.17%	58,832.67
Inflation Linked	35,295.66	24.61%	197,374.44	98.70%	-162,078.78
Floating	48,950.54	34.12%	2,228.28	1.11%	46,722.27
FX-linked	36.28	0.03%	47.27	0.02%	-10.99
EFPD	488.23	100.00%	574.13	100.00%	-85.90
USD	332.53	68.11%	574.13	100.00%	-241.60
EURO	45.37	9.29%	0.00	0.00%	45.37
BRL	0.00	0.00%	0.00	0.00%	0.00
Other	110.33	22.60%	0.00	0.00%	110.33

Historical Data: Annex 1.2

¹ All data in this report refer to FPD held by the public.

1.2 Domestic Federal Public Debt - DFPD

DFPD Issuances and Redemptions

DFPD security issuances totaled R\$ 143.44 billion: R\$ 59.16 billion (41.24%) in fixed-rate securities; R\$ 48.95 billion (34.12%) in floating-rate securities and R\$ 35.30 billion (24.61%) in inflation-linked securities. Analysis of total issuances reveals that R\$ 137.55 billion were issued in traditional auctions, coupled with R\$ 3.84 billion in sales through the Treasury Direct Program (p.7) and R\$ 2.07 billion in direct issuances (p.8).

Table 1.3
Issuances and Re-
demptions of DFPD
Public Securities
August/2022

(R\$ Mn)

	1 st Week 1 to 5/Aug	2 nd Week 8 to 12/Aug	3 rd Week 15 to 19/Aug	4 th Week 22 to 26/Aug	5 th Week 29 to 31/Aug	Total August/22
I - ISSUANCES	24,823.37	24,306.73	42,822.99	32,801.93	18,690.59	143,445.62
Sales	23,930.95	23,437.21	41,654.29	32,049.38	16,473.23	137,545.06
LFT	9,759.58	4,156.76	8,220.37	12,475.95	9,886.04	44,498.70
LTN	8,325.28	13,338.52	19,008.36	13,546.55	729.83	54,948.55
NTN-B	5,552.37	4,101.08	13,376.97	5,480.63	5,857.35	34,368.41
NTN-F	293.72	1,840.85	1,048.59	546.24	0.00	3,729.41
Exchanges	0.00	0.00	0.00	0.00	0.00	0.00
LFT	0.00	0.00	0.00	0.00	0.00	0.00
LTN	0.00	0.00	0.00	0.00	0.00	0.00
NTN-B	0.00	0.00	0.00	0.00	0.00	0.00
NTN-F	0.00	0.00	0.00	0.00	0.00	0.00
Treasury Direct	881.31	869.51	921.57	752.55	410.27	3,835.21
LFT	538.23	565.30	572.23	496.04	250.97	2,422.77
LTN	84.34	85.15	91.83	83.83	51.64	396.80
NTN-B	242.38	198.01	230.53	156.73	99.60	927.25
NTN-F	16.36	21.05	26.98	15.95	8.05	88.39
Non-competitive Issuances with cash inflow¹	0.00	0.00	0.00	0.00	0.00	0.00
Non-competitive Issuances without cash inflow²	11.12	0.00	247.13	0.00	1,807.10	2,065.35
II - REDEMPTIONS	1,541.72	529.07	197,190.72	437.48	281.47	199,980.46
Maturities	1,034.75	0.00	196,478.91	0.00	0.00	197,513.65
LFT	0.00	0.00	0.00	0.00	0.00	0.00
LTN	0.00	0.00	0.00	0.00	0.00	0.00
NTN-B	0.00	0.00	196,431.64	0.00	0.00	196,431.64
NTN-C	0.00	0.00	0.00	0.00	0.00	0.00
NTN-F	0.00	0.00	0.00	0.00	0.00	0.00
Other	1,034.75	0.00	47.27	0.00	0.00	1,082.02
Purchases	0.84	0.01	31.12	0.00	0.00	31.96
LFT	0.00	0.00	0.00	0.00	0.00	0.00
LTN	0.00	0.00	0.00	0.00	0.00	0.00
NTN-B	0.00	0.00	0.00	0.00	0.00	0.00
NTN-F	0.00	0.00	0.00	0.00	0.00	0.00
Other	0.84	0.01	31.12	0.00	0.00	31.96
Exchanges	0.00	0.00	0.00	0.00	0.00	0.00
LFT	0.00	0.00	0.00	0.00	0.00	0.00
LTN	0.00	0.00	0.00	0.00	0.00	0.00
NTN-B	0.00	0.00	0.00	0.00	0.00	0.00
NTN-C	0.00	0.00	0.00	0.00	0.00	0.00
NTN-F	0.00	0.00	0.00	0.00	0.00	0.00
Other	0.00	0.00	0.00	0.00	0.00	0.00
Treasury Direct	506.13	529.06	680.49	437.48	281.47	2,434.63
LFT	280.69	295.76	266.93	266.09	172.12	1,281.60
LTN	80.93	71.34	53.33	46.96	31.76	284.30
NTN-B	133.77	150.60	347.40	117.25	73.34	822.37
NTN-C	0.00	0.01	0.19	0.00	0.00	0.20
NTN-F	10.74	11.35	12.64	7.18	4.25	46.16
Dividends Payments³	0.00	0.00	0.00	0.00	0.00	0.00
Cancelled Bonds	0.00	0.00	0.21	0.00	0.00	0.21
III - IMPACT ON LIQUIDITY^{4, 5}	-23,270.54	-23,777.66	154,614.65	-32,364.45	-16,602.02	58,599.98

¹ Non-competitive issuances that involve inflow cash resources as counterpart;

² Non-competitive issuances that do not involve inflow cash resources as counterpart;

³ Refers to redemptions of securities in order to pay dividends and/or interests over own capital from entity in which government has share. related to the profit of the fiscal year;

⁴ Refers to monetary impact resulting from DFPD market operations. Non-competitive issuances without cash inflow and cancelled bonds are not considered. Positive values mean increase on liquidity.

⁵ The purchases that occurred in the 5th week related to BNDES. in the amount of R\$ 15.13 billion. did not had impact on liquidity.

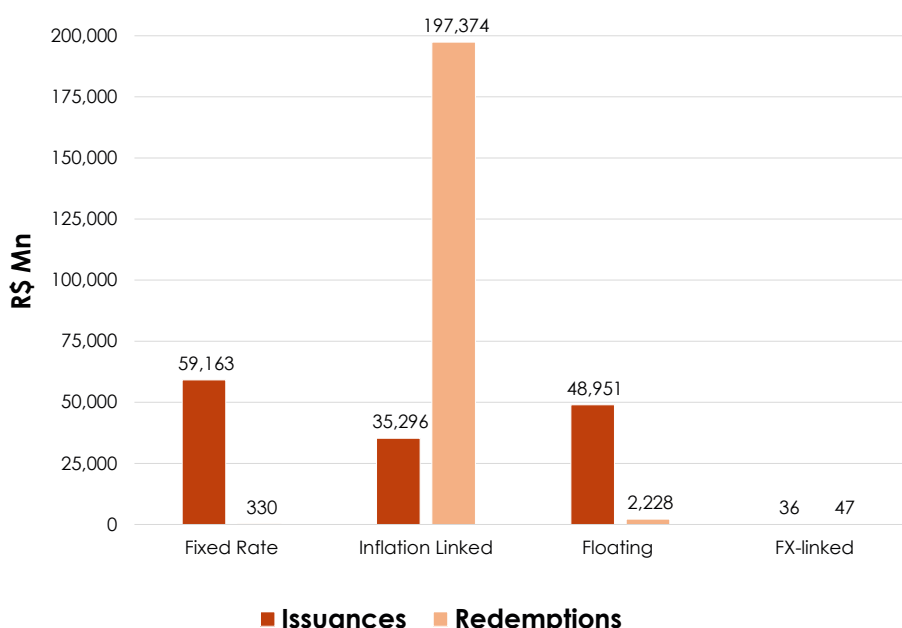
Historical Data: Annex 1.3

In LTN auctions, total issuances added up to R\$ 54.95 billion in securities maturing between April 2023 and January 2026, with payment in cash.

In the case of NTN-B auctions (IPCA-linked securities), issuances totaled R\$ 34.37 billion, maturing between May 2025 and August 2060, in cash payments. As regards LFT auctions, issuances came to a total of R\$ 44.50 billion, maturing in September 2028, in cash payments.

Total DFPD redemptions reached to R\$ 199.98 billion, highlighting inflation-linked securities totaling R\$ 197.37 billion (98.70%). Maturities in the period totaled R\$ 197.51 billion.

Graph 1.1
DFPD Issuances and
Redemptions
August/2022



Treasury Direct Program

Issuances through the Treasury Direct Program² in the month of August totaled R\$ 3,835.21 million, while redemptions totaled R\$ 2,434.63 million, generating net issuances of R\$ 1,400.57 million. The securities in greatest demand were Tesouro Selic, with 63.17% of the total sold.

Treasury Direct stock reached to R\$ 98,229.90 million, representing 1.85% increase compared to the previous month. Highest share of the securities belongs to Tesouro IPCA⁺, with 41.75% of the stock.

Tabela 1.4
Treasury Direct
Program
August/2022

(R\$ Mn)									
Security	Issuances		Redemptions				Net Issuances	Outstanding	
			Repurchases		Maturities				
Fixed Rate									
Tesouro Prefixado	396.80	10.35%	284.30	12.66%	0.00	0.00%	112.49	12,283.25	12.50%
Tesouro Prefixado com Juros Semestrais	88.39	2.30%	46.16	2.06%	0.00	0.00%	42.23	2,929.36	2.98%
Inflation Linked									
Tesouro IPCA ⁺ com Juros Semestrais	230.41	6.01%	126.19	5.62%	189.13	100.00%	-84.92	10,901.94	11.10%
Tesouro IPCA ⁺	696.85	18.17%	507.04	22.58%	0.00	0.00%	189.80	41,014.49	41.75%
Tesouro IGPM ⁺ com Juros Semestrais	0.00	0.00%	0.20	0.01%	0.00	0.00%	-0.20	59.18	0.06%
Floating									
Tesouro Selic	2,422.77	63.17%	1,281.60	57.07%	0.00	0.00%	1,141.17	31,041.67	31.60%
TOTAL	3,835.21	100.00%	2,245.50	100.00%	189.13	100.00%	1,400.57	98,229.90	100.00%
Historical Data: Annex 1.5									

Historical Data: Annex 1.5

² Program involving public security sales over the Internet to individual buyers.

As regards total participants in Treasury Direct operations, 637,554 new investors registered with the Program in the month of August. As a result, total investors registered since the program first began operating came to 20,665,899, corresponding to an increase of 65.78% in the last 12 months.

Table 1.5
Registered Investors
Profile
August/2022

	In the month	Total
Investors by Gender		
Men	79.35%	72.58%
Women	20.65%	27.42%
Investors by Age		
Up to 15 anos	0.36%	0.28%
From 16 to 25 years	36.78%	23.82%
From 26 to 35 years	30.31%	34.81%
From 36 to 45 years	18.86%	23.20%
From 46 to 55 years	8.20%	9.94%
From 56 to 65 years	3.79%	5.12%
Over 66 years	1.71%	2.82%
Investors by Region		
Northern	7.00%	5.70%
Northeast	20.11%	17.42%
Midwest	8.74%	8.71%
Southeast	48.92%	53.11%
South	15.24%	15.06%
Number of Investors		
Registries	637,554	20,665,899

Direct Issuances and Cancellations

Direct issuances of DFPD securities totaled R\$ 2,065.35 million, while the cancellations totaled R\$ 0.21 million in August, generating net issuances of R\$ 2,065.14 million.

Table 1.6
DFPD Non-competitive
Issuances
August/2022

ISSUANCES						
Securities	Date of Transaction	Maturity	Quantity	Financial Volume (R\$ Mn)	Purpose	Legal Support
CFT-B	8/5/2022	01/01/2030	8,314	11.12	PROIES, Program of Incentive to the Restructuring and Strengthening of Institutions of Higher Education	STN Directive nº 1,528, as of 08/05/2022
CVSA	8/15/2022	01/01/2027	290	2.29	Debt Securitization	STN Directive nº 1,537, as of 08/15/2022
CVSB	8/15/2022	01/01/2027	55,596	207.47	Debt Securitization	STN Directive nº 1,537, as of 08/15/2022
CVSB	8/15/2022	01/01/2027	96	0.36	Debt Securitization	STN Directive nº 1,538, as of 08/15/2022
TDA	8/17/2022	several	5,671	0.73	Exchange	STN Directive nº 1,544, as of 08/17/2022
NTN-I	8/24/2022	several	3,594,973	36.28	PROEX, the Export Financing Program	STN Directive nº 1,555, as of 08/24/2022
CVSA	8/29/2022	01/01/2027	4,198	33.11	Debt Securitization	STN Directive nº 1,558, as of 08/29/2022
CVSB	8/29/2022	01/01/2027	19,874	74.19	Debt Securitization	STN Directive nº 1,558, as of 08/29/2022
CVSA	8/29/2022	01/01/2027	1,231	9.71	Debt Securitization	STN Directive nº 1,559, as of 08/29/2022
CVSB	8/29/2022	01/01/2027	19,577	73.08	Debt Securitization	STN Directive nº 1,559, as of 08/29/2022
CVSA	8/30/2022	01/01/2027	122,204	963.81	Debt Securitization	STN Directive nº 1,563, as of 08/30/2022
CVSA	8/30/2022	01/01/2027	82,821	653.20	Debt Securitization	STN Directive nº 1,564, as of 08/30/2022
SUBTOTAL				2,065.35		
CANCELLATIONS						
Securities	Date of Transaction	Maturity	Quantity	Financial Volume (R\$ Mn)	Purpose	Legal Support
TDA	17/08/2022	several	2,043	0.21	Court Orders	STN Directive nº 1,544, as of 08/17/2022
SUBTOTAL				0.21		
NET ISSUANCE				2,065.14		

1.3 Extern Federal Public Debt — EFPD

In the month of August, EFPD issuances totaled R\$ 488.23 million relative to **contractual debt**.

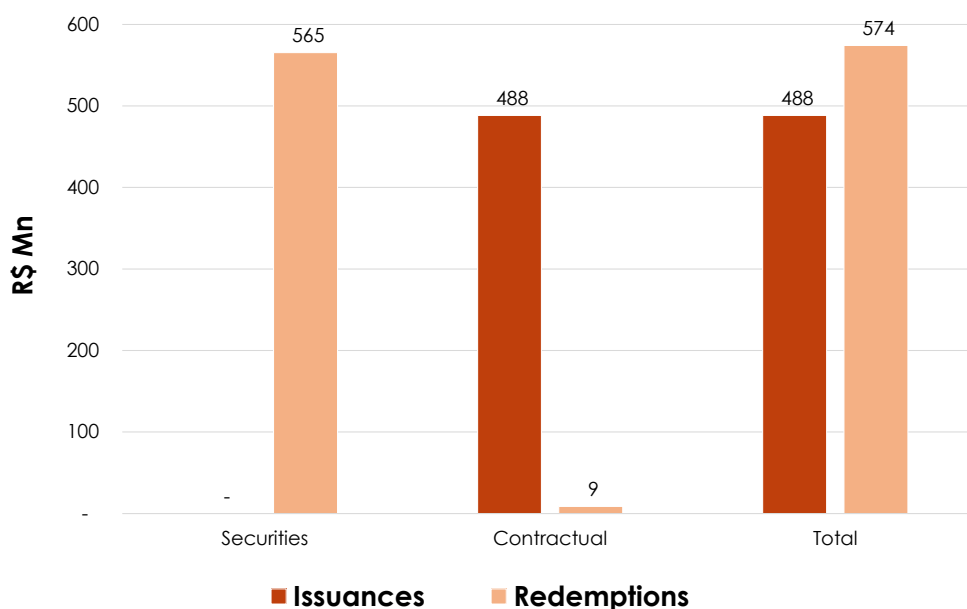
EFPD redemptions, in its turn, totaled R\$ 574.13 million, including R\$ 565.43 million in payments of securities debt and R\$ 8.70 million in payments of contractual debt.

Table 1.7
EFPD Issuances and
Redemptions
August/2022

	(R\$ Mn)		
	Principal	Interest, premiums and charges	Total
ISSUANCES	488.23	0.00	488.23
Securities	0.00	0.00	0.00
Sovereign Bonus	0.00	0.00	0.00
Contractual	488.23	0.00	488.23
Multilateral Organisms	305.82	0.00	305.82
Private Financial Institutions/Gov. Agencies	182.42	0.00	182.42
REDEMPTIONS	6.08	568.05	574.13
Securities	0.00	565.43	565.43
Sovereign Bonus	0.00	565.43	565.43
Buybacks	0.00	0.00	0.00
Contractual	6.08	2.62	8.70
Multilateral Organisms	4.48	2.51	6.99
Private Financial Institutions/Gov. Agencies	1.60	0.11	1.72
NET ISSUANCES			-85.90

Historical Data: Annex 1.6

Graph 1.2
EFPD Issuances and
Redemptions
August/2022



2. Outstanding Federal Public Debt - FPD

2.1 Evolution

Outstanding FPD registered a 0.40% nominal decrease, shifting from R\$ 5,804.39 billion in July to R\$ 5,781.37 billion in August.

Outstanding DFPD decreased 0.42%, shifting from R\$ 5,558.59 billion to R\$ 5,535.52 billion, due to the net redemptions in the amount of R\$ 56.53 billion and to positive interest appropriations totaling R\$ 33.46 billion .

As regards outstanding EFPD, the stock increased 0.02% compared to the month of July, closing August at R\$ 245.85 billion (US\$ 47.47 billion), with R\$ 208.69 billion (US\$ 40.29 billion) referring to securities debt and R\$ 37.17 billion (US\$ 7.18 billion) to contractual debt.

Table 2.1
Outstanding FPD Held
by the Public

	(R\$ Bn)				
	Dec/21	Jul/22	Aug/22		
FPD	5,613.66	5,804.39	5,781.37	100.00%	
DFPD	5,348.94	5,558.59	5,535.52	100.00%	95.75%
LFT	2,063.54	2,188.28	2,258.83	40.81%	39.07%
LTN	1,147.52	1,021.76	1,083.77	19.58%	18.75%
NTN-B	1,554.78	1,764.64	1,600.60	28.92%	27.69%
NTN-C	76.61	79.22	79.36	1.43%	1.37%
NTN-F	464.22	464.72	472.52	8.54%	8.17%
Securitized Debt	3.66	3.48	4.59	0.08%	0.08%
TDA	0.65	0.58	0.57	0.01%	0.01%
Other	37.95	35.89	35.27	0.64%	0.61%
EFPD¹	264.72	245.81	245.85	100.00%	4.25%
Securities	228.60	208.69	208.69	84.88%	3.61%
Global USD	217.84	200.60	200.54	81.57%	3.47%
Global BRL	10.76	8.09	8.15	3.31%	0.14%
Contractual	36.12	37.12	37.17	15.12%	0.64%
Multilateral Organisms	18.49	22.45	22.77	9.26%	0.39%
Private Financial Institutions/Gov. Agencies	17.63	14.67	14.40	5.86%	0.25%

¹ All EFPD values converted to USD and then converted to BRL at the spot FX-rate as of the month's last day.

Historical Data: Annex 2.1

2022 ABP Limits (Reviewed) Outstanding Held by the public (R\$ Bn)

	Min	Max
FPD	6,000.0	6,400.0

2.2 Variation Factors

As mentioned previously the Federal Public Debt - FPD registered a 0.40% nominal decrease, moving from R\$ 5,804.39 billion in July to a level of R\$ 5,781.37 billion in August. This variation was mainly due to the positive interest appropriation in the amount of R\$ 33.60 billion and the net redemptions in the amount of R\$ 56.62 billion.

Table 2.2
FPD Variation Factors
Held by the Public
August/2022

INDICATORS	Monthly		2022	
	R\$ Mn	% of outstanding debt	R\$ Mn	% of outstanding debt ¹
Previous Outstanding Debt¹	5,804,391.66		5,613,655.86	
DFPD	5,558,585.70		5,348,936.05	
EFPD	245,805.96		264,719.81	
Outstanding Debt in August-31-22	5,781,367.55		5,781,367.55	
DFPD	5,535,515.33		5,535,515.33	
EFPD	245,852.22		245,852.22	
Nominal Variation	-23,024.11	-0.40%	167,711.69	2.99%
DFPD	-23,070.37	-0.40%	186,579.28	3.32%
EFPD	46.26	0.00%	-18,867.59	-0.34%
I - Debt Management - (Treasury) (I.1 + I.2)	-23,024.11	-0.40%	168,547.42	3.00%
I.1 - Issuance/Net Redemption	-56,620.74	-0.98%	-199,105.38	-3.55%
I.1.1 - Issuances	143,933.85	2.48%	751,680.19	13.39%
Public Offerings Issuances (DFPD)	141,380.27	2.44%	739,201.52	13.17%
Public Offerings Exchanges (DFPD)	0.00	0.00%	0.00	0.00%
Non-competitive Issuances (DFPD)	2,065.35	0.04%	6,042.33	0.11%
Issuances (EFPD)	488.23	0.01%	6,436.35	0.11%
I.1.2 - Redemptions	-200,554.59	-3.46%	-950,785.57	-16.94%
Current Payments (DFPD)	-199,980.25	-3.45%	-937,476.18	-16.70%
Public Offerings Exchanges (DFPD)	0.00	0.00%	0.00	0.00%
Cancellations (DFPD)	-0.21	0.00%	-8.94	0.00%
Current Payments (EFPD)	-574.13	-0.01%	-13,300.46	-0.24%
Early Redemption (EFPD)	0.00	0.00%	0.00	0.00%
I.2 - Accrued Interest	33,596.63	0.58%	367,652.80	6.55%
DFPD Nominal Accrued Interest	33,464.47	0.58%	379,656.28	6.76%
EFPD Nominal Accrued Interest	132.16	0.00%	-12,003.48	-0.21%
II - Central Bank Operations	0.00	0.00%	-835.73	-0.01%
II.1 - Securities' Net Sales to the Market	0.00	0.00%	-835.73	-0.01%
Total (I + II)	-23,024.11	-0.40%	167,711.69	2.99%

¹ The "Monthly" column relates to the last day of the previous month.

Historical Data: Annex 2.9

2.3 Profile

Indexes

In terms of the FPD profile, DFPD share decreased from 95.77% in July to 95.75% in August. In contrast, EFPD share increased from 4.23% to 4.25%.

The share of fixed-rate FPD securities increased their share from 25.75% in July to 27.06% in August. Share of inflation-linked securities decreased from 31.99% to 29.28%. At the same time, the share of floating-rate securities increased from 37.77% in July to 39.16% in August.

Table 2.3
Profile

(R\$ Bn)

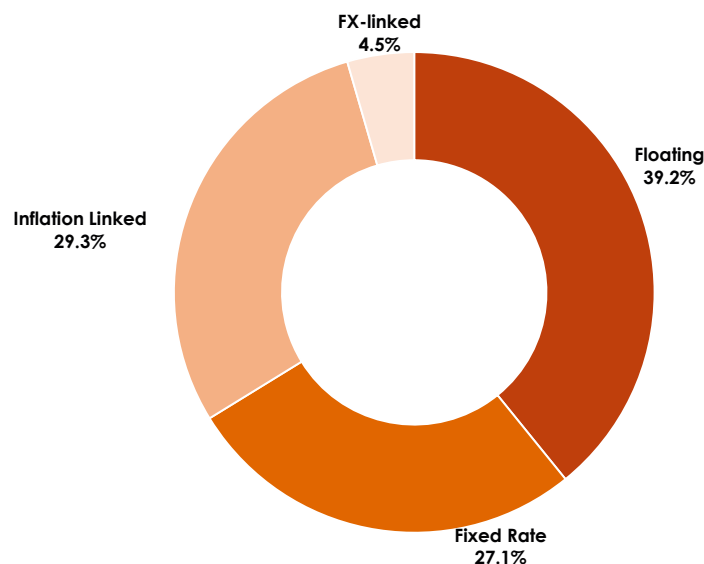
	Dec/21			Jul/22			Aug/22		
FPD	5,613.66	100.00%		5,804.39	100.00%		5,781.37	100.00%	
Fixed Rate	1,622.50	28.90%		1,494.57	25.75%		1,564.44	27.06%	
Inflation Linked	1,644.74	29.30%		1,856.68	31.99%		1,692.63	29.28%	
Floating	2,067.79	36.83%		2,192.58	37.77%		2,264.23	39.16%	
FX-linked	278.63	4.96%		260.56	4.49%		260.07	4.50%	
DFPD	5,348.94	100.00%	95.28%	5,558.59	100.00%	95.77%	5,535.52	100.00%	95.75%
Fixed Rate	1,611.74	30.13%	28.71%	1,486.49	26.74%	25.61%	1,556.29	28.11%	26.92%
Inflation Linked	1,644.74	30.75%	29.30%	1,856.68	33.40%	31.99%	1,692.63	30.58%	29.28%
Floating	2,067.79	38.66%	36.83%	2,192.58	39.44%	37.77%	2,264.23	40.90%	39.16%
FX-linked	24.67	0.46%	0.44%	22.84	0.41%	0.39%	22.36	0.40%	0.39%
EFPD	264.72	100.00%	4.72%	245.81	100.00%	4.23%	245.85	100.00%	4.25%
USD	236.94	89.51%	4.22%	223.57	90.95%	3.85%	223.85	91.05%	3.87%
Euro	5.45	2.06%	0.10%	4.25	1.73%	0.07%	4.25	1.73%	0.07%
BRL	10.76	4.07%	0.19%	8.09	3.29%	0.14%	8.15	3.31%	0.14%
Other	11.57	4.37%	0.21%	9.90	4.03%	0.17%	9.61	3.91%	0.17%

Historical Data FPD: Annex 2.4

Historical Data DFPD: Annex 2.5

Historical Data EFPD: Annex 2.6

Graph 2.1
FPD Profile, by index
August/2022



2022 ABP Limits (Reviewed)
Share in Outstanding FPD

	Min	Max
Fixed Rate	24.0	28.0
Inflation Linked	27.0	31.0
Floating	38.0	42.0
FX-linked	3.0	7.0

Holders

The category of Pensions posted a decrease, in absolute share, from R\$ 1,255.60 billion to a level of R\$ 1,229.42 billion between July and August. Relative participation decreased to 22.21%. Financial Institutions group showed positive variation in its stock level, moving from R\$ 1,643.84 billion to R\$ 1,672.65 billion. Its relative participation increased from 29.57% to 30.22%. Investment Funds increased their stock from R\$ 1,354.52 billion to R\$ 1,361.44 billion. Relative share reached 24.59%. The share of Nonresidents in DFPD decreased from 9.01% to 8.84%. The category of Government decreased its relative share to 3.99%. Insurers posted an increase in their stock to R\$ 218.95 billion in August.

Note that 85.93% of the portfolio of Nonresidents was concentrated in fixed-rate securities, while 62.12% of the Pensions portfolio is composed of inflation-linked securities.

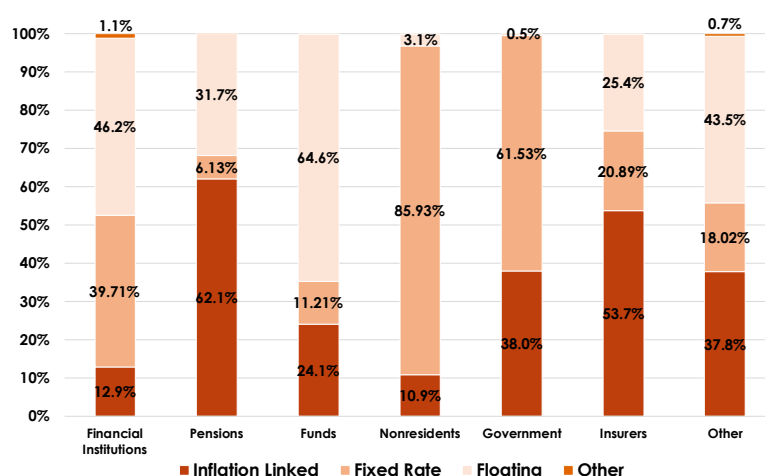
Table 2.4
DFPD Public Securities Holders

(R\$ Bn)

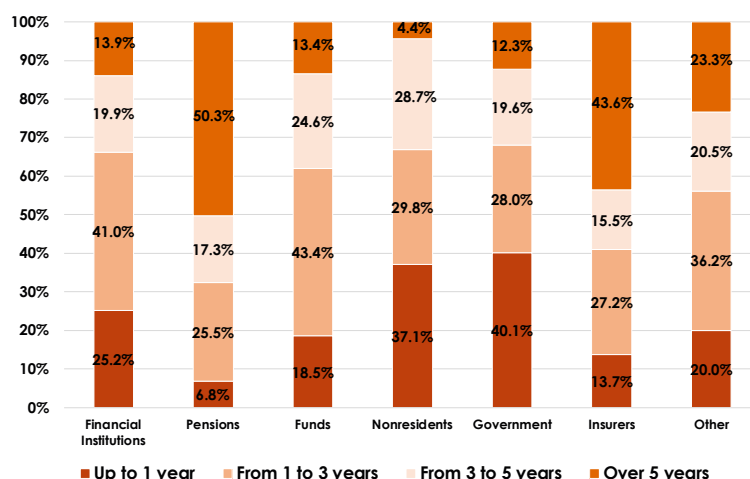
	Dec/21		Jul/22		Aug/22	
Pensions	1,163.01	21.74%	1,255.60	22.59%	1,229.42	22.21%
Financial Institutions	1,575.46	29.45%	1,643.84	29.57%	1,672.65	30.22%
Funds	1,281.88	23.97%	1,354.52	24.37%	1,361.44	24.59%
Nonresidents	564.97	10.56%	500.76	9.01%	489.49	8.84%
Government	234.64	4.39%	237.55	4.27%	221.07	3.99%
Insurers	207.71	3.88%	217.52	3.91%	218.95	3.96%
Other	321.26	6.01%	348.80	6.27%	342.49	6.19%
Total	5,348.94	100.00%	5,558.59	100.00%	5,535.52	100.00%

Historical Data and Notes: Annex 2.7

Graph 2.2
Portfolio Profile. by holder
August/2022



Graph 2.3
Average Maturity Profile. by holder
August/2022



3. Federal Public Debt - FPD Maturity Profile

3.1 Maturities

FPD maturities in the next 12 months posted a decrease, shifting from 24.61% in July to 21.92% in August.

The volume of DFPD securities maturing in up to 12 months shifted from 25.27% in July to 22.46% in August. Fixed-rate securities accounted for 49.04% of this total, followed by floating-rate securities with share of 28.87% of the total.

With respect to EFPD, the percentage maturing in 12 months increased from 9.70% in July to 9.75% in August, with those denominated in American Dollar accounting for 90.83% of this total. It is important to emphasize maturities over five years account for 53.17% of outstanding EFPD.

Table 3.1
FPD Maturities Held by the Public

(R\$ Bn)

Maturities	DFPD				EFPD				FPD			
	Jul/22		Aug/22		Jul/22		Aug/22		Jul/22		Aug/22	
Up to 12 months	1,404.50	25.27%	1,243.22	22.46%	23.84	9.70%	23.98	9.75%	1,428.34	24.61%	1,267.20	21.92%
From 1 to 2 years	946.52	17.03%	1,155.93	20.88%	18.95	7.71%	19.19	7.80%	965.47	16.63%	1,175.12	20.33%
From 2 to 3 years	960.50	17.28%	772.85	13.96%	41.47	16.87%	41.58	16.91%	1,001.96	17.26%	814.43	14.09%
From 3 to 4 years	427.74	7.70%	605.31	10.94%	18.72	7.61%	18.86	7.67%	446.46	7.69%	624.18	10.80%
From 4 to 5 years	536.29	9.65%	422.24	7.63%	11.44	4.65%	11.52	4.69%	547.73	9.44%	433.76	7.50%
Over 5 years	1,283.03	23.08%	1,335.96	24.13%	131.39	53.45%	130.72	53.17%	1,414.42	24.37%	1,466.68	25.37%
TOTAL	5,558.59	100.00%	5,535.52	100.00%	245.81	100.00%	245.85	100.00%	5,804.39	100.00%	5,781.37	100.00%

Table 3.2
Federal Public Debt
Held by the Public Due
in 12 Months, by index

(R\$ Bn)

	Dec/21			Jul/22			Aug/22		
FPD	1,180.26	100.00%	100.00%	1,428.34	100.00%	100.00%	1,267.20	100.00%	100.00%
DFPD	1,163.58	100.00%	98.59%	1,404.50	100.00%	98.33%	1,243.22	100.00%	98.11%
Fixed Rate	478.48	41.12%	40.54%	602.90	42.93%	42.21%	609.63	49.04%	48.11%
Inflation Linked	248.86	21.39%	21.09%	445.87	31.75%	31.22%	273.01	21.96%	21.54%
Floating	434.41	37.33%	36.81%	354.07	25.21%	24.79%	358.96	28.87%	28.33%
FX-linked	1.83	0.16%	0.16%	1.66	0.12%	0.12%	1.62	0.13%	0.13%
EFPD	16.68	100.00%	1.41%	23.84	100.00%	1.67%	23.98	100.00%	1.89%
USD	11.64	69.78%	0.99%	21.63	90.74%	1.51%	21.78	90.83%	1.72%
Euro	1.59	9.55%	0.14%	1.20	5.01%	0.08%	1.19	4.97%	0.09%
BRL	3.09	18.52%	0.26%	0.71	2.98%	0.05%	0.72	2.99%	0.06%
Other	0.36	2.14%	0.03%	0.30	1.27%	0.02%	0.29	1.22%	0.02%

Historical Data: Annex 3.3

2022 ABP Limits (Reviewed) % Up to 12 months

	Min	Max
FPD	19.0	23.0

3.2 Average Maturity

FPD average maturity increased from 3.90 years, in July, to 3.96 years, in August. DFPD average maturity also increased from 3.74 years, in July, to 3.81 years, in August. Parallel to this, EFPD average maturity decreased from 7.49 years in July to 7.38 years in August.

Table 3.3
FPD Average Maturity

	(Years)		
	Dec/21	Jul/22	Aug/22
FPD	3.84	3.90	3.96
DFPD	3.65	3.74	3.81
LFT	2.72	2.90	2.87
LTN	1.26	1.32	1.32
NTN-B	6.64	6.27	6.96
NTN-C	5.64	5.65	5.56
NTN-F	3.13	2.93	2.86
TDA	3.00	2.78	2.74
Securitized Debt	2.15	2.10	2.06
Other	5.85	5.88	5.83
EFPD	7.77	7.49	7.38
Securities	7.51	7.30	7.23
Global USD	7.74	7.46	7.40
Global BRL	2.68	3.15	3.07
Contractual	9.42	8.54	8.19
Multilateral Organisms	11.48	9.49	8.98
Private Financial Institutions/Gov. Agencies	7.26	7.06	6.96

¹ Refers to the pre-Brady bond (BIB), which does not have an embedded call option.

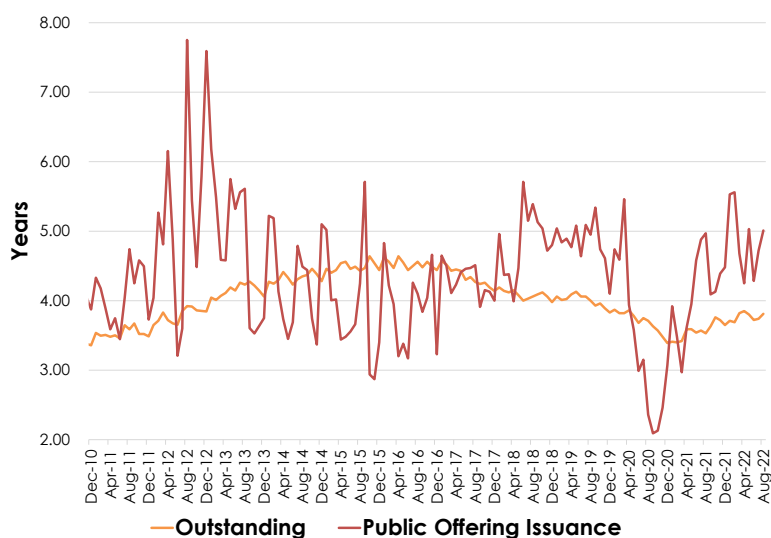
Historical Data: Annex 3.7

Table 3.4
Average Maturity of
DFPD Issuances - Public
Offerings, by index

	(Years)		
Index	Dec/21	Jul/22	Aug/22
DFPD	4.48	4.72	5.01
Fixed Rate	2.62	2.63	3.21
LTN	2.13	2.52	3.05
NTN-F	4.61	5.55	5.49
Inflation Linked	6.85	7.18	6.83
Floating	4.83	5.92	5.90

Historical Data: Annex 3.9

Graph 3.1
Average Maturity of
DFPD Issuances on
Public Offerings Vs
Outstanding Average
Maturity



2022 ABP Limits (Reviewed) Average Maturity (Years)

FPD	Min	Max
	3.8	4.2

3.3 Average Term to Maturity

The National Treasury releases the data of average life using new methodology called Average Term to Maturity – ATM, which is most commonly found in the international literature and therefore allows greater comparability between Brazil and other countries as refers to the maturity of government debt.

The new methodology for the average life is calculated by averaging weighted remaining time to maturity of each security that make up the FPD, considering principal only. The weighting occurs by value of each security, using their face value.

FPD average life, in this new methodology, increased from 5.20 years, in July, to 5.26 years, in August.

Table 3.5
FPD Average Life Held
by the Public

	(Years)		
	Dec/21	Jul/22	Aug/22
FPD	5.15	5.20	5.26
DFPD	4.84	4.95	5.02
Fixed Rate	2.02	2.03	2.01
Inflation Linked	10.78	10.20	11.19
Floating	2.73	2.91	2.88
FX-linked	2.90	2.33	2.25
EFPD	11.45	10.95	10.86
Securities	11.57	11.08	11.00
Global USD	11.95	11.37	11.28
Global BRL	3.46	3.85	3.76
Contractual	10.73	10.19	10.12
Multilateral Organisms	12.80	11.41	11.33
Private Financial Institutions/Gov. Agencies	8.56	8.31	8.20

Note: The new methodology for the average life is calculated by averaging weighted remaining time to maturity of each security that make up the FPD. For securities and contractual debt that have intermediate amortizations, such amortizations are also part of the calculation of average life.
Historical Data: Annex 3.10

4. Federal Public Debt - FPD Average Cost

4.1 Outstanding Average Cost

FPD cumulative 12-month average cost decreased from 10.76% per year, in July, to 10.63% per year, in August.

At the same time, DFPD cumulative 12-month average cost decreased from 11.00% per year, in July, to 10.89% per year, in August.

Regarding to EFPD, this indicator decreased from 5.31% to 4.53% per year, mostly as a result of 0.18% depreciation of the American Dollar against the Brazilian Real in August 2022, compared to 0.42% appreciation recorded in August 2021.

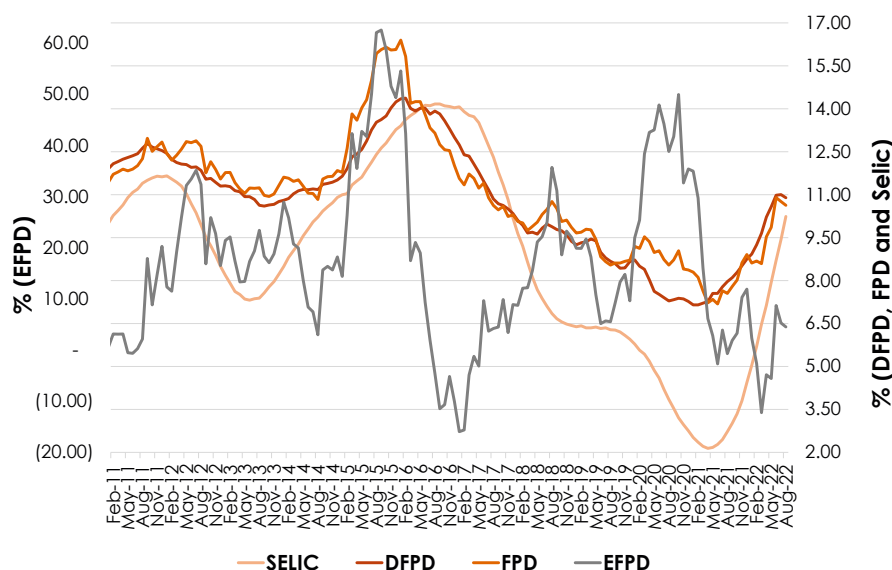
Table 4.1
FPD Average Cost

	12-Month Cumulative Average Cost		
	Dec/21	Jul/22	Aug/22
FPD	8.91	10.76	10.63
DFPD	8.75	11.00	10.89
LFT	4.49	9.54	10.35
LTN	5.74	6.64	6.85
NTN-B	15.63	16.09	14.49
NTN-C	29.75	21.30	19.70
NTN-F	10.31	10.25	10.30
TDA	2.88	3.52	3.77
Securitized Debt	5.98	5.61	5.78
Other	17.65	10.09	9.12
EFPD	11.91	5.31	4.53
Securities	12.90	6.76	6.14
Global USD	13.10	6.66	6.02
Global BRL	10.16	9.79	9.72
Contractual ¹	4.96	-3.27	-4.80
Multilateral Organisms	9.07	2.88	2.38
Private Financial Institutions/Gov. Agencies	2.21	-9.89	-12.89

¹The National Treasury has developed and implemented from January 2012 Contractual External Debt calculation methodology, in line with the existing to the average cost of calculating the DPMFi and External Debt Securities.

Historical Data: Annex 4.2

Graph 4.1
FPD, DFPD and EFPD
Average Cost and Selic
Rate - over the past 12
months



4.2 Average Cost of DFPD - Public Offerings

The average cost of DFPD issuances in public offerings is an indicator that reflects the internal rate of return - IRR of Treasury securities in domestic market, plus the variations of their indexes, considering only the placement of securities in a public offering (auctions) in the last 12 months. From January 2021 on, this indicator is calculated using a new methodology.

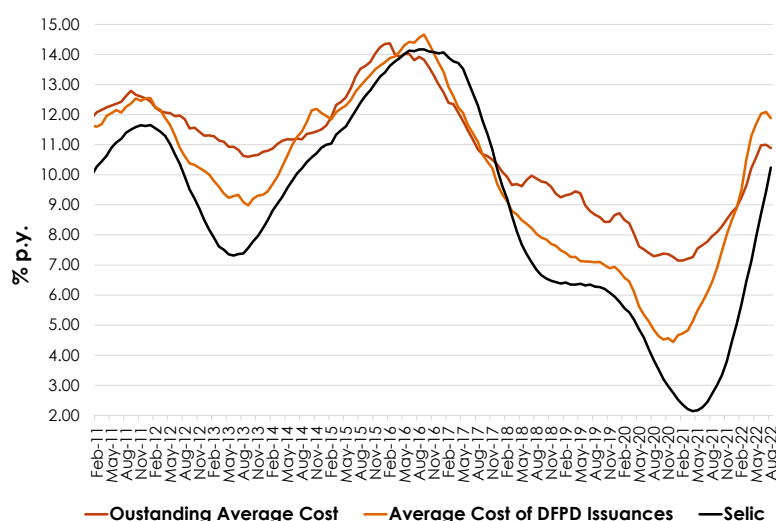
In the month of August, the average cost of DFPD issuances in public offerings moved from 12.09% per year in July to 11.88% per year in August.

Table 4.2
Average Cost of DFPD
Issuances - Public
Offerings

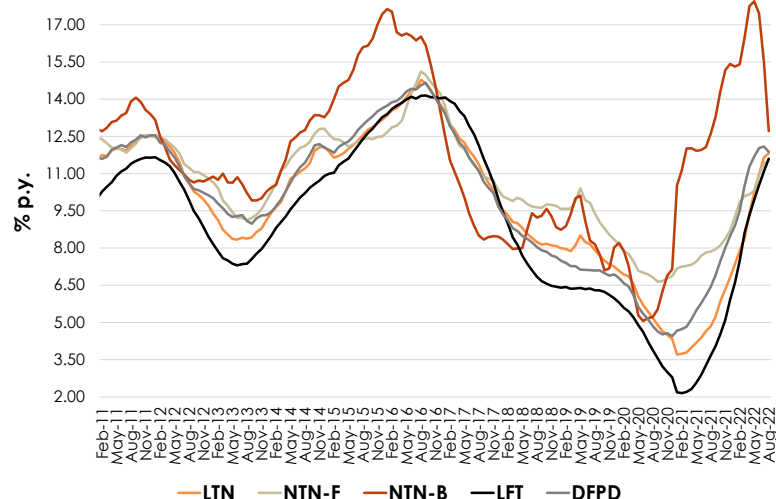
	(% p.y.)				
	Dec/21	Jul/22	Aug/22		
	ACI	ACI	Average Rate of Issuance	Index Variation	ACI
DFPD	8.49	12.09			11.88
LTN	6.81	11.66	11.81	0.00	11.81
NTN-F	8.70	11.40	11.54	0.00	11.54
NTN-B	15.42	15.49	5.43	6.90	12.71
LFT	5.92	11.10	0.21	11.36	11.60

Historical Data: Annex 4.3

Graph 4.2
Outstanding Average
Cost and Average Cost
of DFPD Issuances



Graph 4.3
Average Cost of DFPD
Issuances, by Security



* From January 2021 on, the data of DFPD average cost of emissions are calculated using a new methodology.

5. Secondary Market of Federal Public Securities

5.1 Secondary Market Turnover

The average daily financial volume of securities negotiated on the secondary market increased from R\$ 71.74 billion in July to R\$ 80.35 billion in August. The share of Floating Rate securities increased from 21.37% to 22.46%. The share of Fixed Rate securities decreased from 41.06% to 33.87%. Securities tied to Inflation increased from 37.57% to 43.66%.

(R\$ Bn)

Table 5.1
Secondary Market Turn-
over, by Security

Month	LFT / LFT-A / LFT-B			LTN / NTN-F			NTN-B / NTN-C			Total ⁴		
	Volume ¹	% of Total Traded ²	Variation ³	Volume ¹	% of Total Traded ²	Variation ³	Volume ¹	% of Total Traded ²	Variation ³	Volume ¹	% of Total Traded ²	Variation ³
Dec-12	3,57	14,06%	50,07%	13,27	52,21%	71,44%	8,57	33,73%	78,59%	25,41	100,00%	70,33%
Dec-13	2,43	8,18%	0,80%	14,36	48,25%	75,42%	12,97	43,57%	151,22%	29,76	100,00%	88,80%
Dec-14	2,66	15,55%	20,43%	10,81	63,27%	43,74%	3,59	21,03%	9,51%	17,09	100,00%	31,36%
Dec-15	4,18	20,46%	35,94%	12,56	61,50%	30,38%	3,64	17,81%	-16,21%	20,43	100,00%	19,79%
Dec-16	4,59	14,23%	17,40%	21,99	68,16%	50,48%	5,68	17,61%	-25,67%	32,26	100,00%	23,29%
Dec-17	5,90	18,51%	46,64%	17,59	55,16%	40,60%	8,40	26,34%	5,02%	31,89	100,00%	29,99%
Dec-18	6,27	16,44%	8,73%	24,07	63,12%	53,17%	7,79	20,44%	1,05%	38,13	100,00%	30,62%
Dec-19	9,12	20,55%	11,98%	22,57	50,86%	43,87%	12,69	28,59%	-17,42%	44,37	100,00%	13,22%
Dec-20	13,17	19,71%	58,79%	31,33	46,92%	7,99%	22,28	33,36%	13,61%	66,78	100,00%	17,33%
Dec-21	16,12	25,17%	5,42%	24,71	38,58%	44,33%	23,22	36,26%	9,50%	64,05	100,00%	19,46%
Jan-22	18,66	27,72%	15,76%	23,76	35,29%	-3,86%	24,90	36,99%	7,25%	67,32	100,00%	5,10%
Feb-22	21,57	32,16%	15,58%	19,34	28,85%	-18,57%	26,14	38,99%	4,98%	67,06	100,00%	-0,39%
Mar-22	20,94	24,37%	-2,93%	30,39	35,38%	57,13%	34,53	40,19%	32,07%	85,90	100,00%	28,10%
Apr-22	12,51	18,95%	-40,26%	25,04	37,94%	-17,62%	28,45	43,11%	-17,59%	66,00	100,00%	-23,17%
May-22	14,46	21,47%	15,57%	21,08	31,31%	-15,80%	31,79	47,22%	11,73%	67,33	100,00%	2,02%
Jun-22	13,99	19,00%	-3,19%	29,34	39,82%	39,14%	30,34	41,18%	-4,58%	73,67	100,00%	9,41%
Jul-22	15,33	21,37%	9,53%	29,45	41,06%	0,41%	26,95	37,57%	-11,15%	71,74	100,00%	-2,62%
Aug-22	18,05	22,46%	17,76%	27,22	33,87%	-7,59%	35,08	43,66%	30,15%	80,35	100,00%	12,01%

¹ on purchase and sale transactions (outliers); ii) transactions in which the National Treasury or the Central Bank is the financial principal;

² Share of securities volume traded compared to total volume traded in the month;

³ Variation of total traded in the month compared to the previous month.

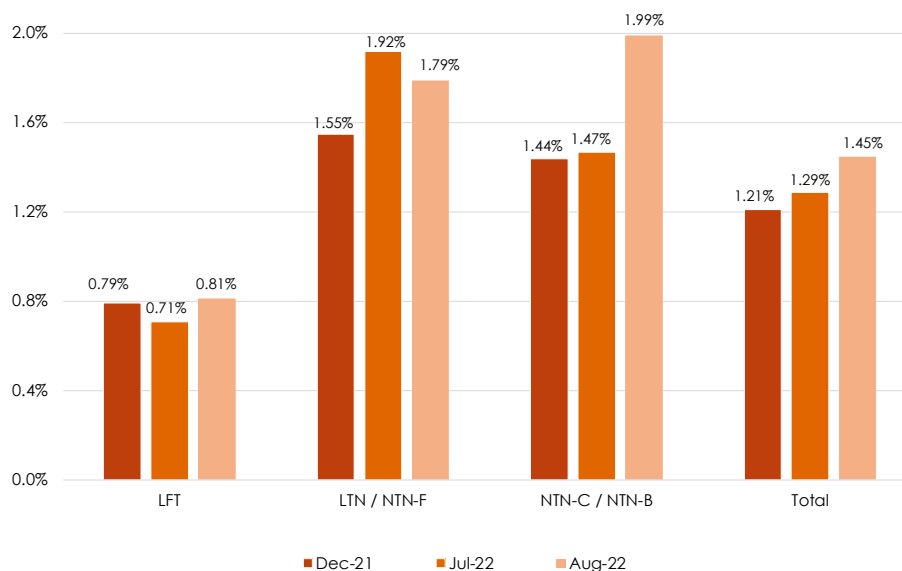
⁴ Sums up all transactions on the secondary market of federal public securities.

Obs.1: Date calculated based on the original numbers, before roundings.

Obs.2: On brokerage operations, only the values of the final principals are accounted.

The daily volume traded in the secondary market for government securities as a percentage of the respective stocks increased from 1.29% in July to 1.45% in August. The participation in the turnover of the floating rate index increased from 0.71% to 0.81% in August; in relation to the Fixed Rate, there was a decrease from 1.92% to 1.79%; in relation to Inflation Linked securities, there was an increase from 1.47% to 1.99%.

Graph 5.1
Secondary Market of
Public Securities - Daily
Turnover as Percentage
of Respective
Outstanding Volume



LTN maturing in January 2026 was, in financial volume, the most traded in August, followed by LTN maturing in January 2024 and January 2023. As regards NTN-F, the bond maturing in January 2025 was the most traded, followed by NTN-F maturing in January 2023 and January 2029.

Among NTN-B, the highest trading volume maturities were, in decreasing order, May 2025, August 2024 and May 2023.

With regard to the LFTs, the most negotiated bonds in August, in descending order, were those maturing in September 2023, September 2028 and March 2027.

Table 5.2
Top 3 Maturities Turnover in the Secondary Market, by index
August/2022

(R\$ Mn)

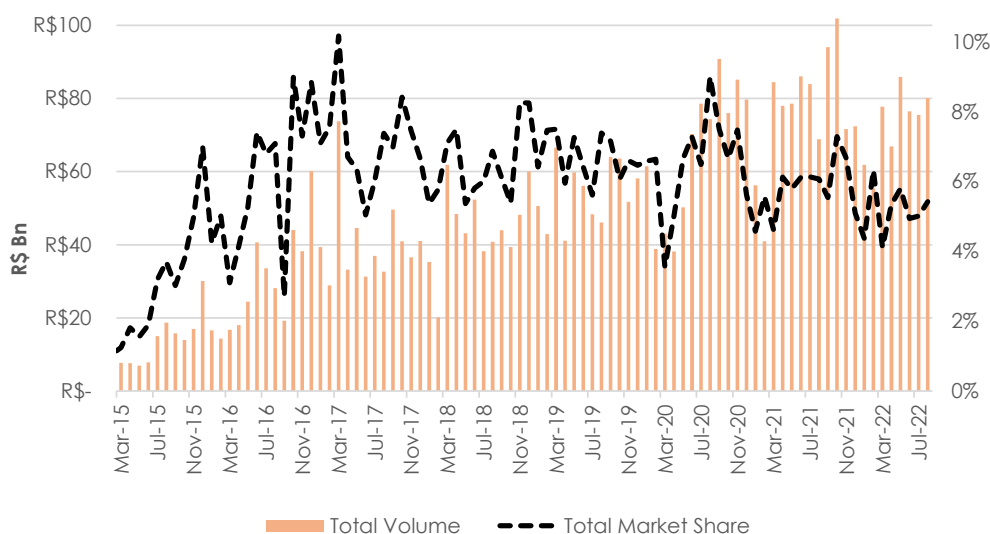
Fixed Rate - LTN					Fixed Rate - NTN-F				
Security	Maturity	Financial Volume	Number of Transactions	% of Respective Outstanding Total	Security	Maturity	Financial Volume	Number of Transactions	% of Respective Outstanding Total
LTN	1/1/2026	8,390.44	164.7	14.50%	NTN-F	1/1/2025	1,577.41	41.9	1.51%
LTN	1/1/2024	2,876.78	78.5	1.10%	NTN-F	1/1/2023	1,135.26	112.3	0.90%
LTN	1/1/2023	2,090.60	59.8	1.46%	NTN-F	1/1/2029	1,104.58	67.0	1.39%

Inflation Linked					Floating (SELIC)				
Security	Maturity	Financial Volume	Number of Transactions	% of Respective Outstanding Total	Security	Maturity	Financial Volume	Number of Transactions	% of Respective Outstanding Total
NTN-B	5/15/2025	7,396.19	356.0	5.82%	LFT	9/1/2023	3,287.34	247.3	1.17%
NTN-B	8/15/2024	5,284.20	522.6	2.50%	LFT	9/1/2028	2,812.59	57.0	2.05%
NTN-B	5/15/2023	4,914.48	356.8	2.62%	LFT	3/1/2027	2,061.42	75.4	0.99%

Obs. 1: Only definitive transactions are considered.
Obs. 2: Financial volume and number of transactions reflect daily averages within the month;
Obs. 3: There are not considered: i) transactions in which pricings are not in +/- 25% range of the price accepted on purchase and sale transactions (outliers); ii) transactions in which the National Treasury or the Central Bank is the financial principal.
Obs. 4: On brokerage operations, only the values of the final principals are accounted.

Regarding total volume, electronic trading platforms market share moved from 6.07% on August 2021 to 5.42% on August 2022. Electronic trading platforms market share reached 5.01% in the previous month. Monthly volume amounted R\$ 80.08 billion (R\$ 75.50 billion in the previous month and R\$ 68.86 billion 12 months earlier).

Graph 5.2
Monthly Volume on Electronic Trading Platforms and its Market Share
August/2022

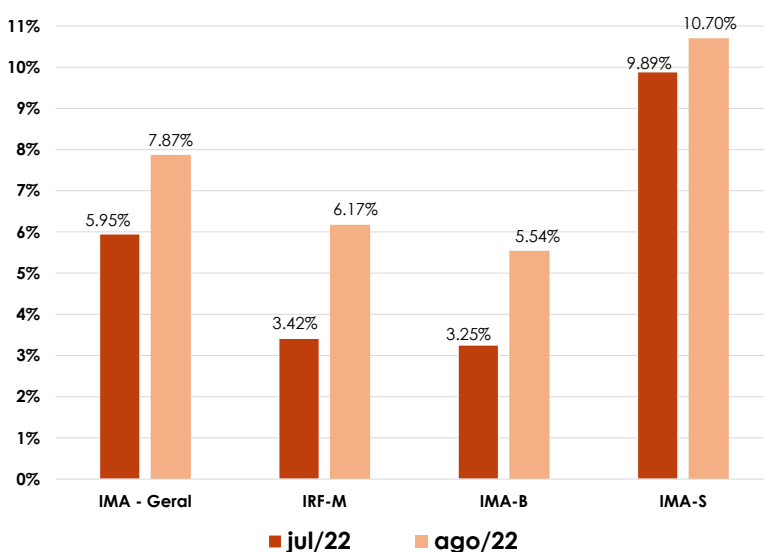


5.2 Public Securities Yield

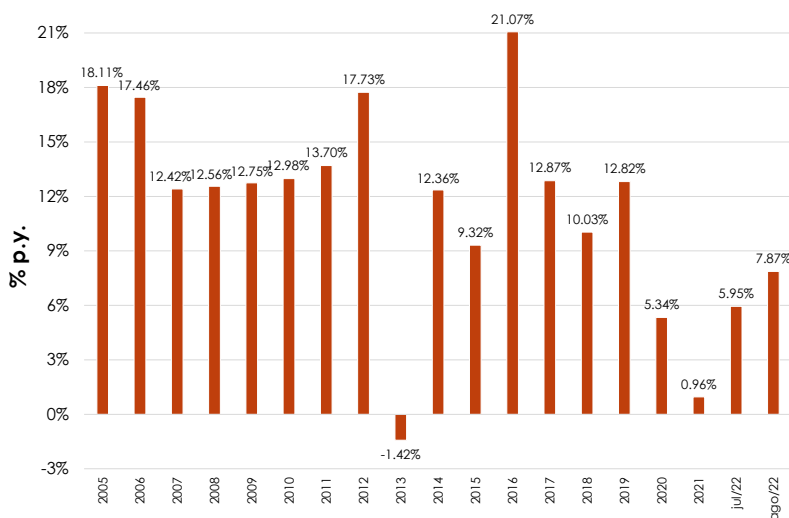
The Anbima Market index - IMA³, created by ANBIMA⁴ in a partnership with the National Treasury, verifies the profitability of a theoretical portfolio composed of public securities in circulation on the market. It is considered an efficient parameter for purposes of evaluating the evolution of public security profitability, and has introduced greater dynamics into the primary and secondary federal public debt markets.

Data for the month of August indicate an increase of 1.92 percentage point in the General Index from July to August. Fixed rate securities, represented by IRF-M, increased 2.75 percentage points. The securities linked to the IPCA, represented by the IMA – B, increased 2.29 percentage points. Finally, the IMA-S index, referring to SELIC-linked securities, in its turn, increased 0.81 percentage point.

Graph 5.3
Public Securities Yield
August/2022
(Cumulative
12-Month %)



Graph 5.4
Public Securities Yield
Evolution - Overall
IMA Cumulative
12-Month %)



³ IMA – Fixed-rate indexes calculated on the basis of the evolution of the market value of portfolios composed of public securities. The overall IMA is the result of weighting of the variations of each index; the IRF-M is composed of fixed-rate securities (LTN and NTN-F); the IMA-C, of securities tied to the IGP-M (NTN-C); the IMA-B, composed of securities tied to the IPCA (NTN-B); and the IMA-S, of securities tied to the SELIC rate (LFT). For greater information on the IMA indices, access: http://www.anbima.com.br/publicacoes/arqs/edesp_ima_tpf.pdf.

⁴ Brazilian Association of Financial and Capital Market Entities.

6. Public Debt Liquidity Reserve

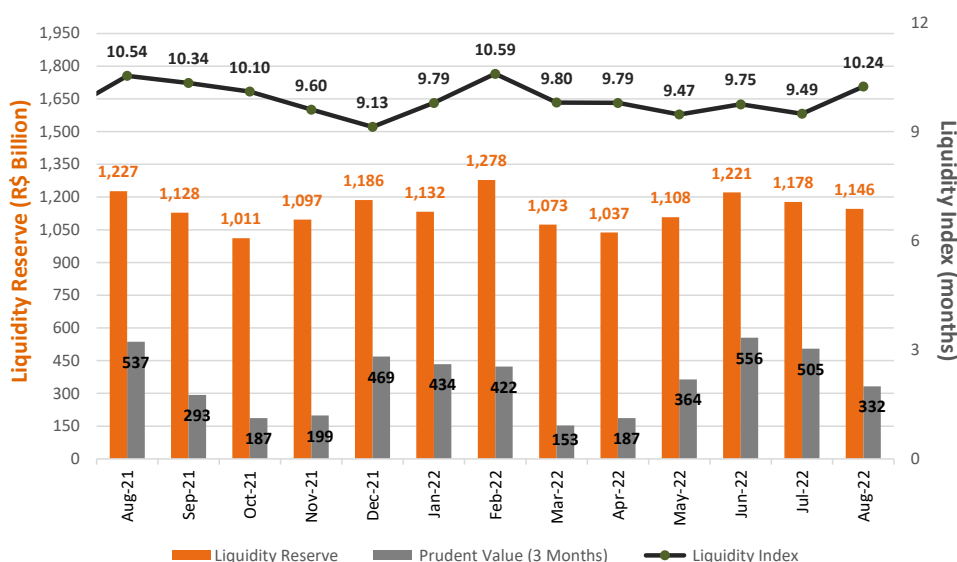
Public debt liquidity reserve (or debt cushion) comprises cash availabilities that are earmarked for domestic debt payment and the cash balance from government bonds issuances proceeds. Debt liquidity reserve comprises a subset of cash availability within the National Treasury Single Account (CTU) at the Central Bank.

The liquidity reserve position registered a 2.69% nominal decrease, shifting from R\$ 1,177.66 billion in July to R\$ 1,146.02 billion in August. In relation to August 2021 position (R\$ 1,227.27 billion), the liquidity reserve posted a 6.62 nominal decrease.

The Liquidity Index shows the sufficiency of the liquidity reserve to cover the Domestic Federal Public Debt (DFPD) payments. In order to measure this index, it is considered the maturities of principal and interest of securities held by the public, as well as the interest payments relative to the bonds in the Central Bank portfolio. The projection, at current value, considers only the issues already made and a specific scenario.

The current level guarantees the payment of the next 10.24 months of maturities. The maturities related to the months of September/22, January/23 and May/23 are estimated in R\$ 709.32 billion.

Graph 6.1
Public Debt Liquidity Reserve



7. Statistics of Executed Guarantees

The Brazilian National Treasury monitors financial events related to the contracts guaranteed by the federal government, warning debtors about the need to fulfill their obligations and about the sanctions, penalties and other consequences of defaulting, according to the contracts and binding legislation.

In August 2022 the Treasury intervened and paid R\$ 977.63 million related to guaranteed contracts, of which R\$ 336.99 million are related to the State of Maranhão, R\$ 255.41 million to the State of Goiás, R\$ 118.50 million to the State of Rio de Janeiro, R\$ 107.41 million to the State of Alagoas, R\$ 105.62 million to the State of Piauí and R\$ 53.69 million to the State of Rio Grande do Sul. From January to August 2022, the Treasury paid R\$ 6.00 billion related to guaranteed contracts.

For additional information on executed guarantees access <https://www.tesourotransparente.gov.br/publicacoes/relatorio-mensal-de-garantias-honradas-rmgh/> and <https://www.tesourotransparente.gov.br/historias/painel-de-garantias-honradas>.